

Ph: 250-395-3362
 Fax: 250-395-3368
 e-mail: info@willowridgehomes.ca
 www.willowridgehomes.ca

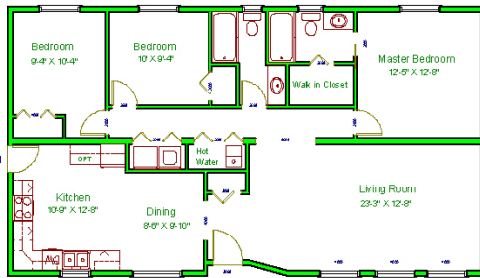


Plant Location: 5429 Industrial flats Road
 (Hwy 97 and Hwy 24) 100 Mile House, B.C.
 Mailing: Box 242, Lone Butte, B.C. V0K 1X0

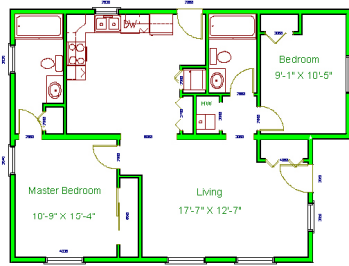
Double Wide FLOOR PLANS

Choose a Floor Plan or
 Custom Design your own Home

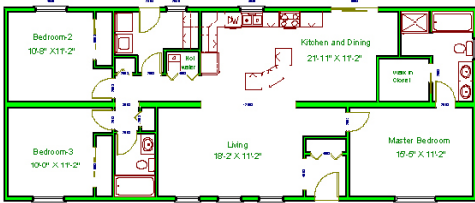
27'x48' Double-Wide Mobile Home Floor Plan
 Harmony Series Model 400, 1289 sq ft



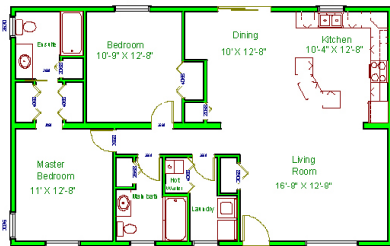
27'x36' Double-Wide Mobile Home Floor Plan
 Harmony Series Model 401, 918 sq ft



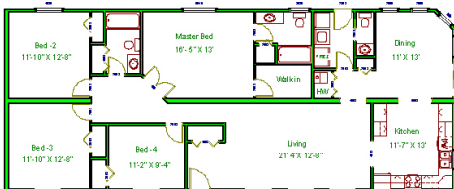
24'x59' Double-Wide Mobile Home Floor Plan
 Harmony Series Model 402, 1416 sq ft



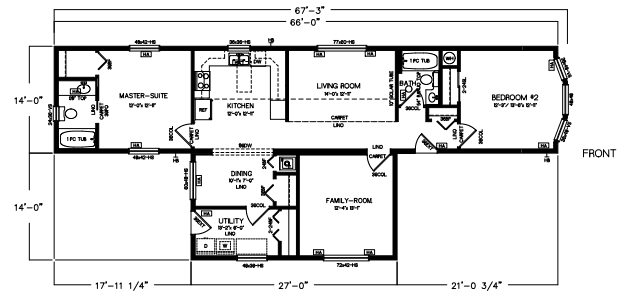
27'x43' Double-Wide Mobile Home Floor Plan
 Harmony Series Model 403, 1204 sq ft



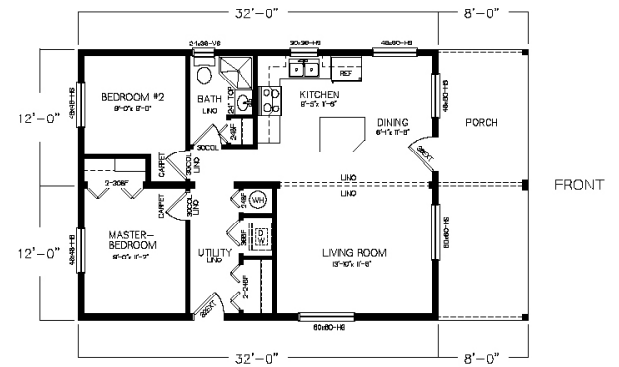
27'x66' Double-Wide Mobile Home Floor Plan
 Harmony Series Model 404, 1777 sq ft



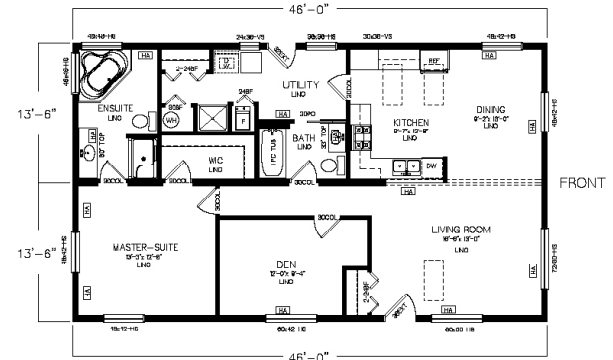
14'x66' Single-Wide Mobile Home with 14'x27' Addition Floor Plan -
 Model 405, 1320 sq ft



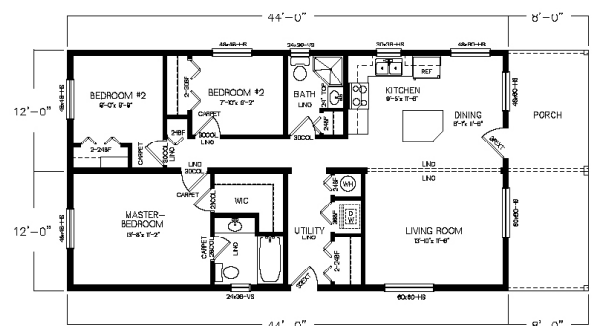
24'x40' Double-Wide Mobile Home Floor Plan - Model 406, 768 sq ft



27'x46' Double-Wide Mobile Home Floor Plan - Model 407, 1242 sq ft



24'x52' Double-Wide Mobile Home Floor Plan - Model 408, 1056 sq ft



Our
Plan Swap
 feature allows
 you to take our
Harmony Series
 (Double Wide)
 designs and easily
 convert them to a
Carolina Series
 (Modular) design.



**PLANS ARE
 REVERSIBLE**

Double Wide STANDARD FEATURES

Willow Ridge homes come with an extensive list of Standard and Optional features to give you anesthetically appealing home at a price you can afford. A few of these features include*:



STANDARD FEATURES:

Building materials:

- For floor (2X8)
- Walls (2X6) exterior interior (2X4) 16 o.c.
- Roof Trusses (Engineered) 3/12 pitch
- Insulation – R22 walls, R28 floor and R28 vault ceiling or R40 flat.
- 6 ml poly vapour barrier
- All Sheathing is OSB. Or upgrade to plywood
- Vault kitchen and living room (depending on floor plan)

Exterior:

- Vinyl Siding – D5 Cove Gentek
- Vinyl 1/2" "J" Trims
- Fascia - Smartboard
- White Vinyl Soffits
- 2 solid 6 panel exterior doors with peephole and hardware
- 2 Coach Lights.
- One Hose bib
- 2 exterior GFI plugs
- All Roofing materials, Shingles 30 yr laminate (IKO Cambridge 30)
- Vented Ridge
- Steel Frame for Unit
- Plywood underbelly, painted and screwed to bottom of Unit
- Standard Windows with Screens, safety glass in bathroom (Specify Clear or Obscure)

Interior:

- Drywall with rounded (or square) outside corners
- Crown Molding - 2 1/4
- Baseboard
- Window trims
- Flooring – Lino, Carpet or laminate
- White 6 panel closet and Interior doors with hardware (chrome or brass)
- Closet shelf and rods
- Gas Furnace
- Electric hot water tank (33 gal)
- 1" White blinds and valances or 2" white faux blinds
- Plumbed for Washer -Wired for Dryer

Bathroom (s):

- White vanity with white sink
- Single lever tap
- Countertop with tile backslash (6X6 white tiles) one row high
- Mirror
- Vanity Light Bar
- White tub/Shower Combination with tap and tile around perimeter (6X6 white) one row
- Towel rack(s), toilet paper holder, towel ring (s)
- White Toilet with seat

Electrical:

- All plugs and cover plates – Standard or upgrade to Decora - White
- Standard Light Fixtures
- 100 amp panel
- Hood fan in kitchen
- Bathroom Fan – 50 cfm
- Door Bell (2)
- Two phone lines
- Two coax cable lines
- Smoke Detector (2)

Kitchen:

- White Cabinets with Hardware
- Countertop – Laminate edging or upgrade to Oak or Maple edging
- Tile backsplash (6X6 white tiles) One row high.
- Double Stainless Sink with single lever tap
- 18 cu ft Fridge
- EZ Clean stove

Misc:

All nails, screws, glue and paint (1 color)

Set-up includes one set of pressure treated stairs.

Size 4' X 4' platform with stairs.

Based at 36" set up height, anything higher will be an additional cost.

Materials are subject to change and may vary from unit to unit. As well as availability at time of building.

Units are built to CSA Z240

One year Limited Warranty with an additional Ten Year on Structure.

OPTIONS: DOUBLE WIDE

Exterior:

- Low e argon windows
- French Door
- 9 Lite Exterior Door
- Skylight
- Bay(s)
- White grid Windows
- Pot lights in exterior soffits (room permitting)
- Dormers - above doors and bays
- Smart board trims – around windows and doors
- Frost free tap
- Exterior GFI
- Glass sliding door
- Increase pitch of roof – hinged roof section
- Eave overhangs

Interior:

- Mirrored Closet Doors
- Air Conditioner
- Speaker wire
- Additional plug outlets

- Vault remainder of ceilings
- Pocket Doors
- Rough in for built in vacuum
- French interior door
- Extra phone jack
- Cabinets above Washer and Dryer
- Window sills

Lighting:

- Ceiling Fan
- Ceiling fan with light kit
- Additional Lighting
- Track lighting
- Coach light
- Pot lights for interior lighting

Heating and Hot Water:

- Gas Hot water tank
- Electric furnace -**Panel will need to be upgraded to 200 amp Service
- Upgrade size of hot water tank

Bathroom:

- Shower door
- Medicine Cabinet
- Additional Sink in Bathroom
- Upgrade Bathroom tub from our standard
- Walk in Shower

Kitchen:

- Cabinet Upgrades – Maple or Oak
- End Wall by fridge
- Flip tray in front of Kitchen Sink
- Lazy susan in corner cabinet

Appliances:

- Over the range Microwave
- Stacker Washer and Dryer
- Washer and Dryer
- Dishwasher

Misc:

- Additional set of stairs

Set-up and Delivery: Discuss with your Sales Representative.

All options may not be available in all homes.

Sales Contract and Supplement to Sales Contract will provide additional information in regards to the Home.

All Onsite and Final hook ups will be the responsibility of the Owner, gas lines, plumbing, electrical and Air Conditioner.

If there is an item that you would like to see in your home and it is not listed, please discuss with a Sales Representative and this will be reviewed.