

Ph: 250-395-3362
 Fax: 250-395-3368
 e-mail: info@willowridgehomes.ca
 www.willowridgehomes.ca

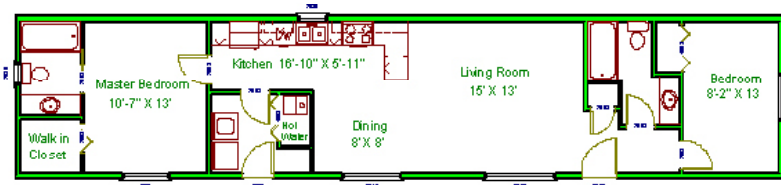


Plant Location: 5429 Industrial flats Road
 (Hwy 97 and Hwy 24) 100 Mile House, B.C.
 Mailing: Box 242, Lone Butte, B.C. V0K 1X0

Single Wide FLOOR PLANS

Choose a Floor Plan or
 Custom Design your own Home

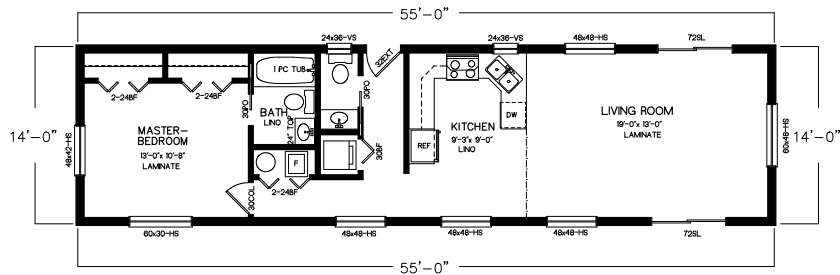
14'x66' Single Wide Floor Plan - Savannah Series Model 300, 924 sq ft



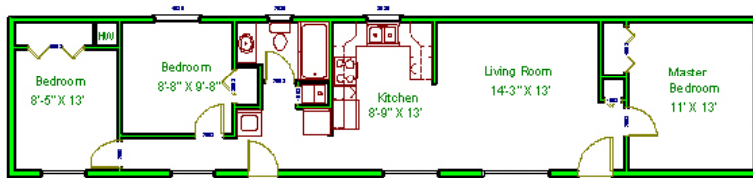
14'x66' Single Wide Floor Plan - Savannah Series Model 301, 924 sq ft



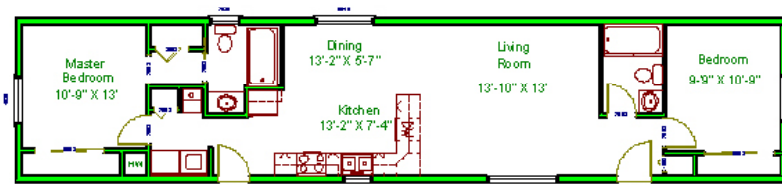
14'x55' Single Wide Floor Plan - Savannah Series Model 301A, 770 sq ft



14'x66' Single Wide Floor Plan - Savannah Series Model 302, 924 sq ft



14'x66' Single Wide Floor Plan - Savannah Series Model 303, 924 sq ft



Single Wide STANDARD FEATURES

Willow Ridge homes come with an extensive list of Standard and Optional features to give you anesthetically appealing home at a price you can afford. A few of these features include*:



STANDARD FEATURES:

Building materials:

- For floor (2X8)
- Walls (2X6) exterior interior (2X4) 16 o.c.
- Roof Trusses (Engineered) 4/12 pitch
- Insulation – R22 walls, R28 floor and R28 vault ceiling or R40 flat. Batt Insulation.
- 6 ml poly vapour barrier
- All Sheathing is OSB. Or upgrade to Plywood
- Vault ceiling – kitchen and living room (Depending on Plan)

Exterior:

- Vinyl Siding D5 Cove Gentek
- Vinyl ½" "J" Trims
- Fascia - Smartboard
- White Vinyl Soffits
- 2 solid 6 panel exterior doors with peephole and hardware
- 2 Coach Lights.
- One Hose bib
- 2 exterior GFI plugs
- All Roofing materials, Shingles 30 yr laminate (IKO Cambridge)
- Vented Ridge
- Steel Frame for Unit
- Plywood underbelly, painted and screwed to bottom of Unit.
- Standard Windows with Screens, safety glass in bathroom (Specify Clear or Obscure)

Interior:

- Drywall with rounded (or square) outside corners
- Crown Molding – 2 1/4
- Baseboard
- Window trims
- Flooring – Lino, Carpet or laminate
- White 6 panel closet and Interior doors with hardware (chrome or brass)
- Closet shelf and rods
- Gas Furnace
- Electric hot water tank (33 gal)
- 1" White blinds and valances or 2" white faux blinds
- Plumbed for Washer - Wired for Dryer

Bathroom (s):

- White vanity with white sink
- Single lever tap
- Laminate countertop with tile backslash (6X6 white tile) One row high
- Mirror
- Vanity Light Bar
- White Tub/Shower Combination with tap and tile around perimeter (6X6 tile)
- Towel rack(s), toilet paper holder, towel ring (s)
- White Toilet with seat

Electrical:

- All plugs and cover plates – Standard or upgrade to Decora

- Standard Light Fixtures
- 100 amp panel
- Hood fan in kitchen
- Bathroom Fan – 50 cfm
- Door Bell (2)
- Two phone lines
- Two coax cable lines
- Smoke Detector (2)

Kitchen:

- White Cabinets with Hardware
- Countertop – Laminate edging or upgrade to Maple or Oak edging
- Tile backsplash (6X6 white tiles) one row high
- Double Stainless Sink with single lever tap
- 18 cu ft Fridge
- EZ Clean stove - electric

Misc:

All nails, screws, glue and paint (1 color).

Set-up includes one set of pressure treated stairs 4' X 4' platform and one set of steps. Based at 36" set up height, anything higher will be an additional cost.

Materials are subject to change and may vary from unit to unit. As well as availability at time of building.

Units are built to CSA Z240

One year Limited Warranty with an additional Ten Year on Structure

OPTIONS: SINGLE WIDE

Exterior:

- Low e argon windows
- French Door
- 9 Lite Exterior Door
- Skylight
- Bay(s)
- Trap Windows
- White grid Windows
- Pot lights in exterior soffits (room permitting)
- Dormers - above doors and bays
- Smart board trim around windows and doors
- Extra frost free tap
- Exterior GFI
- Glass sliding door
- Eave overhangs

Interior:

- Mirrored Closet Doors
- Air Conditioner
- Speaker wire
- Additional plug outlets
- Vault remainder of ceilings
- Pocket Doors
- Rough in for built in vacuum
- French interior door

- Extra phone jack
- Cabinets above Washer and Dryer
- Window sills

Lighting:

- Ceiling fan
- Ceiling fan with light kit
- Additional Lighting
- Track lighting
- Coach lights
- Pot lights for interior lighting

Heating and Hot Water:

- Gas hot water tank
- Electric furnace -**Panel will need to be upgraded to 200 amp Service
- Upgrade size of hot water tank

Bathroom:

- Shower door
- Medicine Cabinet
- Additional Sink in Bathroom
- Upgrade Bathroom tub from our standard
- Walk in Shower

Kitchen:

- Upgrade Kitchen Tap
- Cabinet Upgrades – Maple or Oak
- End Wall by fridge
- Flip tray in front of Kitchen Sink
- Lazy susan in corner cabinet

Appliances:

- Over the range Microwave
- Stacker Washer and Dryer
- Washer and Dryer
- Dishwasher

Misc:

- Additional set of stairs

Set-up and Delivery: Discuss with your Sales Representative

All options may not be available in all homes

Sales Contract and Supplement to Sales Contract will provide additional information in regards to the Home.

All Onsite and Final hook ups will be the responsibility of the Owner, gas Lines, plumbing, electrical and Air Conditioner.

If there is an item that you would like to see in your home and it is not listed, please discuss with a Sales Representative and this will be reviewed.