

Ph: 250-395-3362
 Fax: 250-395-3368
 e-mail: info@willowridgehomes.ca
 www.willowridgehomes.ca

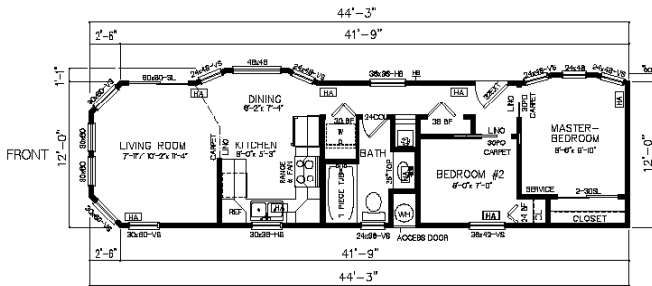


Plant Location: 5429 Industrial flats Road
 (Hwy 97 and Hwy 24) 100 Mile House, B.C.
 Mailing: Box 242, Lone Butte, B.C. V0K 1X0

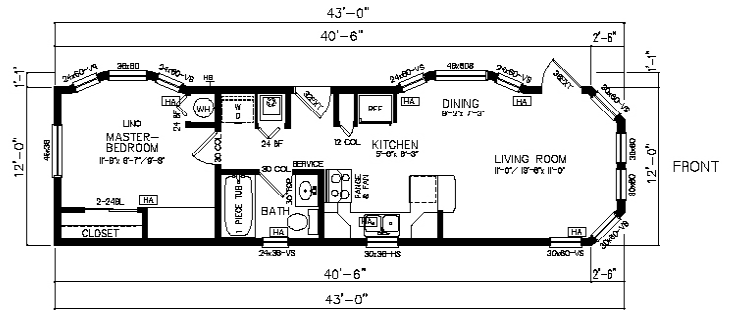
Park Model FLOOR PLANS

Choose a Floor Plan or Custom Design your own Home

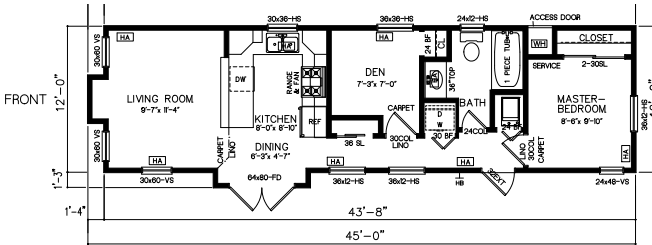
12'x44'-3" Park Model Floor Plan - Model 700, 538 sq ft



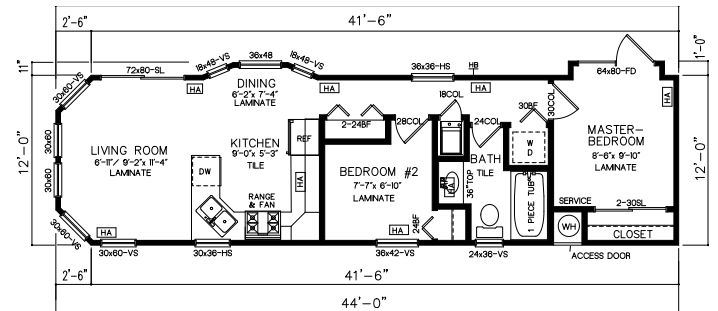
12'x43' Park Model Floor Plan - Model 703, 534 sq ft



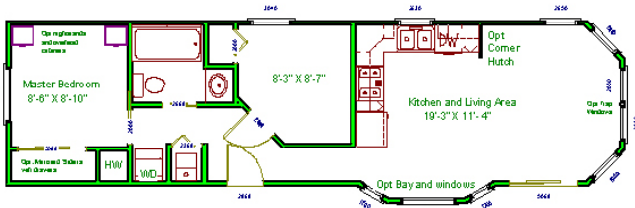
12'x45' Park Model Floor Plan
 Tranquility Series Model 700A, 543 sq ft



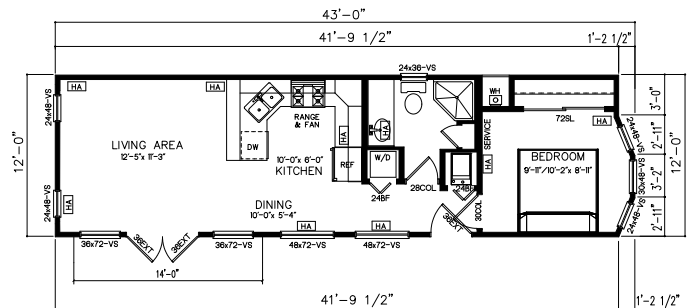
12'x44' Park Model Floor Plan - Model 700D, 538 sq ft



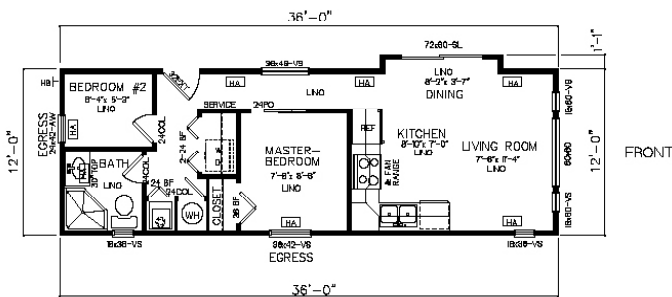
12'x45' Park Model Floor Plan
 Tranquility Series Model 701, 538 sq ft



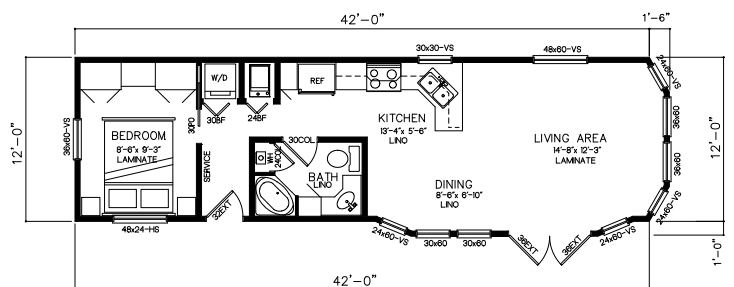
12'x43' Park Model Floor Plan - Model 706A, 509 sq ft



12'x36' Park Model Floor Plan - Model 702, 432 sq ft



12'x43'-6" Park Model Floor Plan - Model 707, 535 sq ft



Park Model STANDARD FEATURES

Willow Ridge homes come with an extensive list of Standard and Optional features to give you anesthetically appealing home at a price you can afford. A few of these features include*:



STANDARD FEATURES:

Building materials:

- For floor (2X8) 16 o.c.
- Walls (2X4) or (2X6) exterior 16 o.c.
- Interior Walls 2 X 4 16 o.c.
- Roof Trusses 5/12 pitch (Engineered)
- Insulation – R12 walls (for 2X4), R22 for 2X6 walls. R28 floor and R28 vault ceiling and R40 for Flat. This is all Batt insulation.
- Vault ceiling in Living and Kitchen area and remainder Flat ceiling
- 6 ml poly vapour barrier
- All Sheathing is OSB or Upgrade to Plywood

Exterior:

- Vinyl Siding
- Vinyl 1/2" "J" Trims
- Fascia - Smartboard
- White Vinyl Soffits
- 1 Solid 6 panel exterior door with peep-hole and hardware
- Glass Sliding door (if applicable on plan)
- 2 Coach Lights.
- One Hose bib
- 2 exterior GFI plugs,
- All Roofing materials, Shingles 30 yr laminate (IKO Cambridge)
- Steel Frame for Unit – Heavy duty
- 3/8 Plywood screwed to bottom side of unit, painted Black
- Standard Windows with Screens, safety glass in bathroom (Specify Clear or Obscure) White PVC

Interior:

- Drywall with rounded or square outside corners
- Crown Molding 2 1/4"
- Baseboard
- Window trim and window sills
- Flooring –Lino, Carpet or Laminate
- White 6 panel Closet and Interior doors with Hardware (Chrome or brass)
- Closet shelf and rods
- Furnace, AC Ready - Propane
- Hot Water Tank – (33 gal) propane
- White blinds with valances or 2" white faux blinds
- Plumbed for Washer – gas line for Dryer
- Waterline to Fridge area

Bathroom:

- White Vanity with white sink Countertop with tile backslash (6X6 white) one row high
- Single lever tap
- Mirror
- Vanity Light Bar
- Tub/Shower Combination with taps
- 6 X 6 white tile around tub – one row high
- Towel rack(s), toilet paper holder, towel ring (s)
- Toilet with seat

Electrical:

- All plugs and cover plates – Standard or upgrade to Decora
- Standard Light Package
- 50 amp panel
- Hood fan in kitchen
- Bathroom Fan – 50 cfm
- Door Bell (1)
- Two phone lines
- Two coax cable lines
- Smoke Detector (s)
- Propane and carbon monoxide detector(s)

Kitchen:

- White Cabinets with Hardware
- Countertop – laminate edging or upgrade to Oak or Maple edging
- Tile backsplash (6X6 white tiles) one row high
- Double Stainless Sink with single lever tap
- 18 cu ft Fridge
- Self clean Stove, propane conversion

Misc:

All nails, screws, glue and paint (1 color).

Set-up includes one set of pressure treated stairs

Based at 36" set up height, anything higher will be an additional cost. Straight off the Park Model.

Materials are subject to change and may vary from unit to unit. As well as availability at time of building.

Units are built to CSA Z241

One year Limited Warranty

OPTIONS: PARK MODEL

Exterior

- Low e argon windows
- French Door
- 9 Lite Exterior Door
- Skylight
- Side and end bay(s)
- Trap Windows
- White grid Windows
- BBQ Outlet
- Pot lights in exterior soffits
- Dormers – above doors and bays
- Smart Board Trim – around windows and doors
- Extra Frost Free Tap

Interior:

- Deluxe Bedroom nightstands and overhead cabinets
- Mirrored Closet Doors
- Drawers in bottom portion of closet
- Corner Hutch
- TV Armoire in Bedroom

- Hot water on demand system
- Air Conditioner
- Speaker wire
- Additional plug outlets
- Vault remainder of Park Model
- Pocket Doors
- French Doors or other style of your preference.
- Extra phone jack
- Additional Paint colors for interior walls

Lighting:

- Reading Lights
- Bunk Bed Lights
- Ceiling Fan
- Ceiling Fan with lights
- Additional Lighting
- Track Lighting

Bathroom:

- Shower door
- Medicine Cabinet
- Shower Stall

Kitchen:

- Cabinet Upgrades – Maple or Oak
- End Wall by fridge
- Flip tray in sink cabinet
- Lazy Susan in corner cabinet (s)

Appliances:

- Over the range Microwave
- Stacker Washer and Dryer
- Ice Maker in Fridge
- Dishwasher

Misc:

- Additional set of stairs
- Pine siding
- Cedar Siding
- Hardiplank Siding
- Three axles, tires and hitch if you would like these items to keep, please advise

All options may not be available in all homes.

Set-up: Discuss with your Sales Representative.

Sales Contract and Supplement to Sales Contract will provide additional information in regards to the Home.

All Onsite and Final hook ups will be the responsibility of the Owner, gas hook ups, plumbing, electrical and Air Conditioner Hook ups.

If there is an item that you would like to see in your home and it is not listed, please discuss with a Sales Representative and this will be reviewed.